



30W CO₂ Laser Marking Machine for Non-metallic Materials

Product Description

1. High stability: using well-known brand accessories, product quality is guaranteed, and machine performance is stable;
2. High efficiency: good laser beam quality, high conversion efficiency, high processing efficiency;
3. Convenience: easy-to-use marking software interface, simple and easy to understand;
4. Customizable: There are various models to choose from, and the height of the machine can be customized;

Parameters

Work Area (cm)	0~300*300mm(100w.0~600*600)
Laser Power	30W
Marking Software	EZCAD Control Card + Software
External Red Beam	Included
Marking Range	70*70mm / 100*100mm / 150*150MM
Cooling ways	Force-air Cooling
Power supply	0.5KW/AC220V/50HZ
Gross Power	<1.2KW
Working Temperature	0-40℃
Response time	0.5ms
Frequency of pulse	20kHz

Application & Samples

Materials can be marked: acrylic, wood, leather, bamboo, rubber, glass, crystal, paper etc.

E-mail: carina@riselaser.com

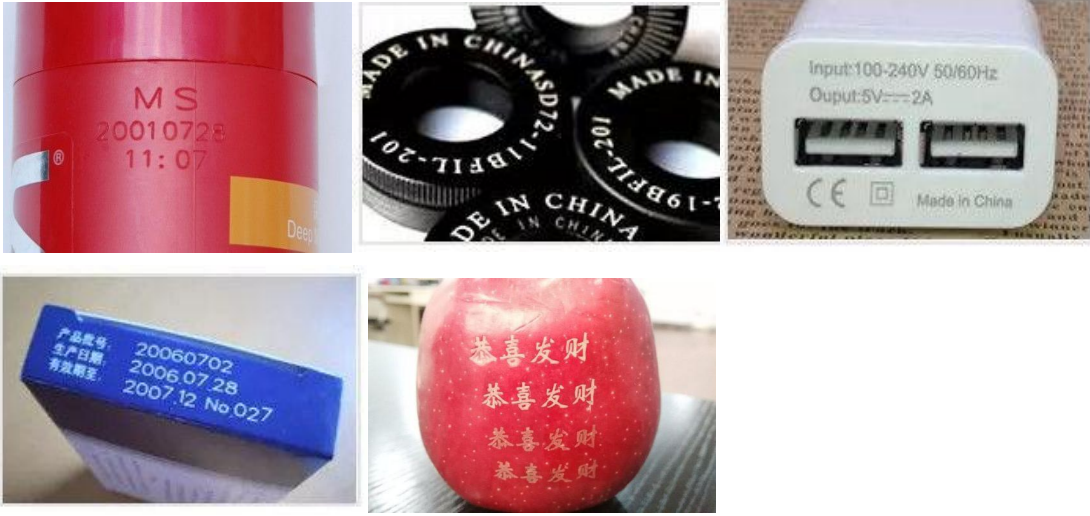
Website: www.riselaser.com www.shdlaser.com

Address: Building 5, COFCO (Fuan) Robot Intelligent Manufacturing Industrial Park, No. 90 Dayang Road, Fuhai Street, Bao'an District, Shenzhen, China, 518103



Riselaser

深圳市华升激光科技有限公司 SHENZHEN RISELASER TECHNOLOGY CO., LTD



Certifications



Packaging



After-sale Service

E-mail: carina@riselaser.com

Website: www.riselaser.com www.shdlaser.com

Address: Building 5, COFCO (Fuan) Robot Intelligent Manufacturing Industrial Park, No. 90 Dayang Road, Fuhai Street, Bao'an District, Shenzhen, China, 518103



Riselaser

深圳市华升激光科技有限公司

SHENZHEN RISELASER TECHNOLOGY CO., LTD

1. We will supply instant online service to foreign customers. According to foreign customer's requirement, we are able to arrange for technicians to go aboard to install or maintain the machine.
2. We offer free replacement within one year warranty if any damage under normal using condition.
3. We will offer software upgrade for free for life.
4. After the expiry of warranty, we can renew the warranty contract, which ensures the same service.
5. We will regularly evaluate the staff's service attitude to improve service quality.

Exhibition



E-mail: carina@riselaser.com

Website: www.riselaser.com www.shdlaser.com

Address: Building 5, COFCO (Fuan) Robot Intelligent Manufacturing Industrial Park, No. 90 Dayang Road, Fuhai Street, Bao'an District, Shenzhen, China, 518103



Riselaser

深圳市华升激光科技有限公司

SHENZHEN RISELASER TECHNOLOGY CO., LTD

FAQ

Q1: Are you a factory or a trade company ?

A1: We are manufacturing laser machines and we provide perfect OEM and after-sale service.

Q2: How about the machine guarantee?

A2: We generally offer you 1 year guarantee.

Q3: How can I use the machine, if I'm a new buyer?

A3: We will deliver English manual and video with the machine to you. If you still need our help, please contact us.

Q4: How do you control your quality?

A4: We'll test the machine and go through every corner to check the accuracy. To ensure quality Machines will not be dispatched until running continuously and smoothly at least two days.

Q5: How can I know your machine is designed for my product?

A5: You can send us samples and we test it on the machine.

E-mail: carina@riselaser.com

Website: www.riselaser.com www.shdlaser.com

Address: Building 5, COFCO (Fuan) Robot Intelligent Manufacturing Industrial Park, No. 90 Dayang Road, Fuhai Street, Bao'an District, Shenzhen, China, 518103