



Mini Portable Laser Welding Machine for Jewelry

Main Features of Jewelry Laser Soldering Machine

1. Energy, pulse width, frequency, the spot size can be adjusted in a large range, to achieve a variety of effects of welding. Parameter is adjusted by the closed cavity control rod, simple and efficient.
2. Have 24 hours of continuous work, operating performance is stable, within 10000 hours of maintenance free.
3. Humanized design, ergonomic, long time working without fatigue.
4. Fast speed, high efficiency, large depth, small deformation, small heat affected zone, high quality welding joint, no pollution, high efficiency and environmental protection.
5. Widely used in jewelry accessories, electronic components, glasses clocks and watches, hardware, precision equipment, medical equipment, auto parts, gifts and crafts, etc.

Machine Details

Machine Appearance

We use pure corrugated paint, it is easy to clean, durable and not easily been scratched.



E-mail: carina@riselaser.com

Website: www.riselaser.com www.shdlaser.com

Address: Building 5, COFCO (Fuan) Robot Intelligent Manufacturing Industrial Park, No. 90 Dayang Road, Fuhai Street, Bao'an District, Shenzhen, China, 518103



10X Microscope & Touch Panel

Microscope can enlarge 10 times of your welding object, easy to weld

Touch panel use a 7-inch LED screen with English

Water Chiller

Function: for xenon lamp cooling

Fan are for water cooling

Note: please use 3L distilled water for water chiller. Distilled water has no minerals and impurity while purified water and tap water have impurity that would affect cooling system. The worst effects is burn out xenon lamp.



Foot Switch

Easy to use, you can control the laser output just buy press by foot.





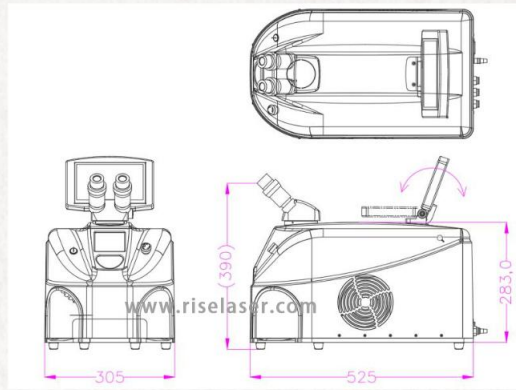
深圳市华升激光科技有限公司

SHENZHEN RISELASER TECHNOLOGY CO., LTD



RL-Y60

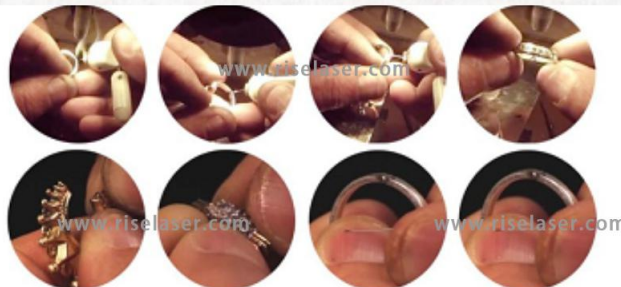
YAG Laser Welding Machine



Laser Power : 60 Watt
Size :L*W*H : 525*305*390 mm
Single Pulse Energy : 40J
Aiming and Positioning: CCD and Microscope
Cooling method :Water Cooling



Gold and silver jewellery welding,especially for small jewellery shop repairing.Metal parts welding such as stainless steel and aluminum in all kinds of industry.



www.riselasers.com sales@riselasers.com

E-mail: carina@riselasers.com

Website: www.riselasers.com www.shdlaser.com

Address: Building 5, COFCO (Fuan) Robot Intelligent Manufacturing Industrial Park, No. 90 Dayang Road, Fuhai Street, Bao'an District, Shenzhen, China, 518103



Riselaser

深圳市华升激光科技有限公司

SHENZHEN RISELASER TECHNOLOGY CO., LTD

Advantage of Mini Portable Laser Welder

1. Energy, pulse width, frequency and faculae can be adjusted within a wide range to achieve different welding effects.
2. The parameters are adjusted by the control rod in the sealed cavity, simple and efficient .
3. Ceramic focusing cavity imported from the U.K. is employed, corrosion resistant, high temperature resistant, efficient in optical/electrical conversion.
4. The focusing cavity's service lifespan is 8 to 10 years, and the service lifespan of the Xenon lamp is over 8 million times.
5. World-leading automatic light shielding system is employed to remove stimulation of light on eyes during operation.
6. 24-hour continuous operation, with stable operating performance and maintenance-free within 10,000 hours. Personalized design in compliance with ergonomics principles.

Welding Sample



E-mail: carina@riselaser.com

Website: www.riselaser.com www.shdlaser.com

Address: Building 5, COFCO (Fuan) Robot Intelligent Manufacturing Industrial Park, No. 90 Dayang Road, Fuhai Street, Bao'an District, Shenzhen, China, 518103



Riselaser

深圳市华升激光科技有限公司

SHENZHEN RISELASER TECHNOLOGY CO., LTD

Certificate



Exhibition

E-mail: carina@riselaser.com

Website: www.riselaser.com www.shdlaser.com

Address: Building 5, COFCO (Fuan) Robot Intelligent Manufacturing Industrial Park, No. 90 Dayang Road, Fuhai Street, Bao'an District, Shenzhen, China, 518103



深圳市华升激光科技有限公司

SHENZHEN RISELASER TECHNOLOGY CO., LTD



E-mail: carina@riselaser.com

Website: www.riselaser.com www.shdlaser.com

Address: Building 5, COFCO (Fuan) Robot Intelligent Manufacturing Industrial Park, No. 90 Dayang Road, Fuhai Street, Bao'an District, Shenzhen, China, 518103