



Riselaser

深圳市华升激光科技有限公司

SHENZHEN RISELASER TECHNOLOGY CO., LTD

Raycus RFL-C1000 Fiber Laser Source



Riselaser



Product description

Compared with traditional laser source, continuous fiber laser sources have higher photoelectric conversion efficiency and lower power consumption and better beam quality. The fiber laser source is compact and can be used at any time. Because of its flexible laser output mode, it can be easily integrated with system equipment.

Advantages

- Excellent beam quality
- High reliability
- High power stability
- Continuously adjustable power, fast switching response
- Maintenance-free operation
- High electro-optical conversion efficiency
- High modulation frequency

Application

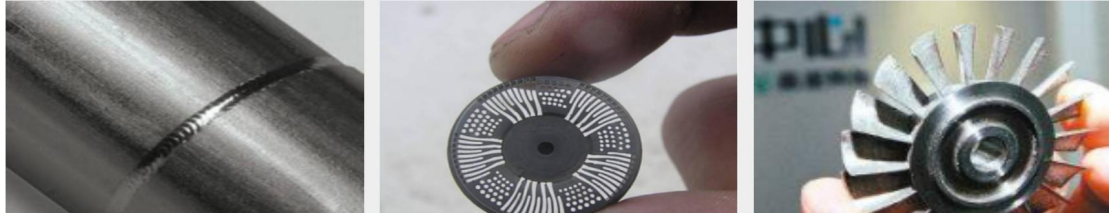
RFL-C1000 is suitable for industrial cutting, welding and 3D printing. This single-module continuous fiber laser can not only meet the diverse needs of customers, but also provide personalized professional customization. At present, QBH is selected as the output connector of the laser, which has multiple control modes and good compatibility.



Riselaser

深圳市华升激光科技有限公司

SHENZHEN RISELASER TECHNOLOGY CO., LTD



Parameters

Optical properties	
Rated output power (W)	1000
Working mode	continuous/modulation
Power adjustment range (%)	10~100
Center wavelength (nm)	1080±5
Output power instability (%)	±1.5
Modulation frequency (Hz)	1~20,000
Red light indicating output power (mW)	0.5~1
QBH output head optical output characteristics	
Beam quality M ²	1.5
Fiber core diameter (μm)	25 (14, 20, 50, 100, 200 optional)
Output optical cable length (m)	20
Electrical characteristics	
Working voltage	220±20% V AC, 50/60Hz
Numerical aperture (NA)	0.11
Maximum power consumption (W)	4000
Control method	RS-232/AD/Ethernet
Other features	
Appearance size (W×H×D) (mm)	485×183×723
Weight (kg)	<40
Working environment temperature range (°C)	10~40
Working environment humidity range (%)	<70
Storage temperature (°C)	-10~60
Cooling method	water cooling



**Riselaser
Certificate**

深圳市华升激光科技有限公司

SHENZHEN RISELASER TECHNOLOGY CO., LTD



Exhibition



E-mail: carina@riselaser.com

3

Website: www.riselaser.com www.shdlaser.com

Address: Building 5, COFCO (Fuan) Robot Intelligent Manufacturing Industrial Park, No. 90 Dayang Road, Fuhai Street,
Bao'an District, Shenzhen, China, 518103